

SHIJIAZHUANG TOPSTAR INTERNATIONAL TRADING CO.,LTD

Address: B1302 Zhongliang plaza No.345 Youyi north street Shijiazhuang, Hebei, China.

E-mail: info@topstarmetal.com WA: +86 15075167267



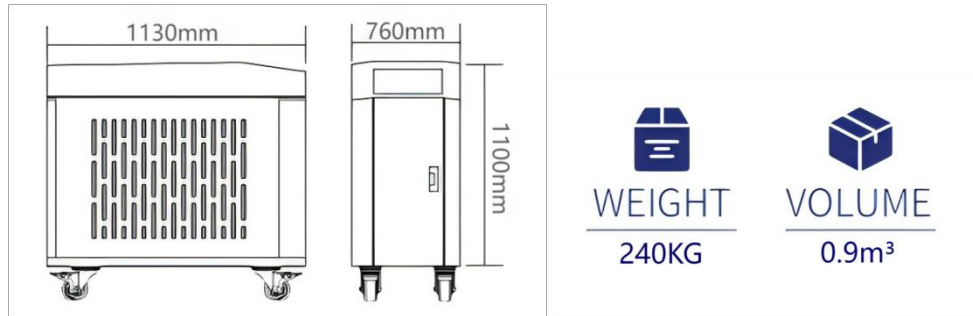
***STRONG LAUNCH
EASY TO GET STARTED***

2000W(single wire)

LASER WELDING MACHINE



It is portable and can be carried by one person, via motorcycle, car, or truck. It is suitable for construction sites, outdoor work, rooftops, and other flexible work environments.



ODM TAILOR-MADE

Tailor-made in accordance with customer welding needs, high-quality laser beam, high energy density, precise laser control system, great penetration, small heat-affected zone, not easy to cause deformation, beautiful and consistent weld seam, significantly increase welding speed, reduce labor cost of grinding and polishing, improve production efficiency.

POWER	STAINLESS STEEL	CARBON STEEL	GALVANIZED SHEET	ALUMINIUM	BRASS
2000W	5mm	5mm	5mm	5mm	5mm

HANDHELD WELDING

LINKAGE CONTROL SYSTEM



The new generation of handheld laser welding adopts a 7-inch industrial-grade LED touch screen, with an intelligent operating system, it supports simple operation mode. With simple and fast operation, it is easy to learn. It only takes 30 minutes of training to master the welding operation.

Equipment introduction

The TOPSTAR handheld laser welder utilizes the latest generation of fiber lasers and is equipped with our proprietary WOBBLE welding head. It fills a gap in the handheld laser welding industry. It offers advantages such as simple operation, beautiful welds, and high welding speeds. It requires no filler material and is suitable for welding thin stainless steel, iron sheets, galvanized sheets, and other metals, effectively replacing traditional welding processes such as TIG and ARD welding.

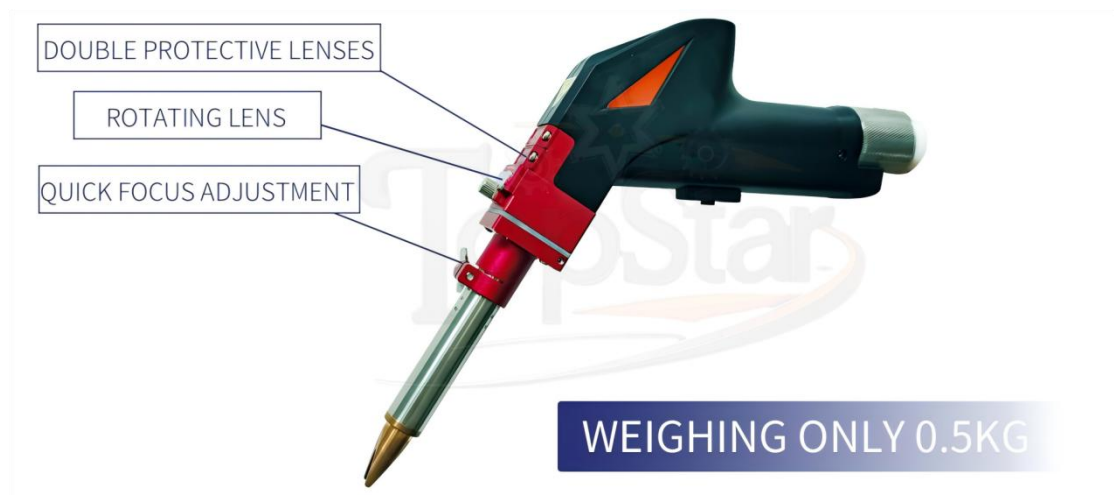


WIRE FEEDER FOR LASER WELDING ONLY

Precise wire drawing without sticking,dust-proof sealed design,stepper motor+ planetary reducer which is different from DC motors of the other suppliers,high-speed controls four-wheel drive wire feeding assembly.

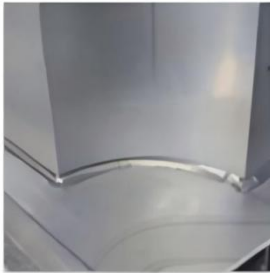


THE FIFTH GENERATION HANDHELD WELDING GUN





WELDING SAMPLE



ALUMINUM ALLOY
WELDING



STAINLESS STEEL
WELDING



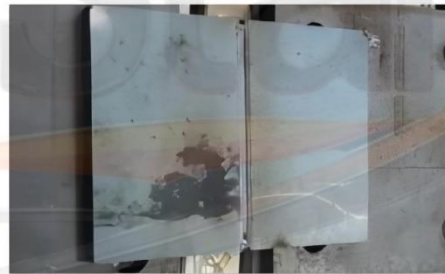
CARBON STEEL
WELDING



GALVANIZED SHEET
WELDING



0.2-0.5 THIN WELDING



8MM (ONE SIDE WELDING BOTH
SIDES FORMATION)

MAIN CONFIGURATION

Serial Number	Name	Remarks
1	Welding control system	Self-develop
2	Welding head	Self-develop
3	Wire feeder	Self-develop
4	Laser	Raycus/MAX/BWT
5	Water chiller	Hanli chiller
6	Bodycase	Self-develop



PRODUCT HIGHLIGHTS





SPECIFICATION

Item	Parameter
Equipment	Handheld Laser Welding Machine
Dimention	1550L*870W*1180H(mm)
Laser Power	2000w
Laser Wavelength	1085nm±5nm
Fiber Length	10m Standard
Welding Head	0.5kg Rotary Lens Welding Head
Way of Working	Continuous/Pulse
Aiming and Positioning	Red Light Positioning
Welding penetration(mm/s)	2000w:0.5-5mm
Welding Gap Request	0.5mm for swing weld gap, ≤1.2mm for filler welding gap(the welding gap must be less than 0.3 times the metal thickness).
Operating Voltage	AC220V、 50Hz&60Hz
Gas	Nitrogen, Argon, Air

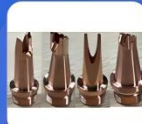


ACCESSORIES LIST



Accessories List

No.	List
1	Welding Nozzles*8
2	Wire Feeding Nozzle*6
3	Aluminum Wire Feed Wheels*4
4	SS Wire Feed Wheels*2
5	Wire Feeding Tube*1
6	Protective Lens*8
7	Laser Protective Glasses*1
8	Gun Protective Film*1
9	Hexagonal Wrenches*1 set
10	Pressure Reducing Valve*1
11	Dual-purpose Screwdriver*1
12	Pressure Reducing Valve Adapter Pipe (10 to 8)
13	8mm Gas Pipe*1
14	Water Pipe*1
15	Support Pole*1
16	Welding Gun Holder*1
17	Feeding Wire*1 roll
18	Tool Box*1



Welding Nozzles



Wire Feeding Nozzle



Aluminum Wire Feed Wheels



SS Wire Feed Wheels



Wire Feeding Tube



Protective Lens



Laser Protective Glasses



Gun Protective Film



Hexagonal Wrenches



Pressure Reducing Valve



Dual-purpose Screwdriver



Pressure Reducing Valve Adapter Pipe (10 to 8)



8mm Gas Pipe



Water Pipe



Support Pole
(Excluding the Mini Series)



Welding Gun Holder



Feeding Wire



Tool Box